

***Mayor's Office of Homeland Security
and Emergency Preparedness
M.O.H.S.E.P.***



**Louisiana Banker's Association
May 4, 2023**

The Mayor's Office of Homeland Security and Emergency Preparedness (MOHSEP) is the **coordinating agency for emergency and disaster activities.**

MOHSEP provides the citizens of East Baton Rouge Parish with a comprehensive, integrated and coordinated public safety program to ensure natural and man made risks are reduced, emergency services delivered and consequences of events managed *to provide a safe, livable and sustainable community.*

5 Goals of Emergency Management

- **PREPARE** for....
- **PREVENT** from....
- **MITIGATE** the risk of....
- **RESPOND** to....
- **RECOVER** from....



Any and all disasters / incidents that occur within
East Baton Rouge Parish

Community Characteristics

PREPARE for...



AREA OF PARISH

**455.2 SQUARE
MILES**

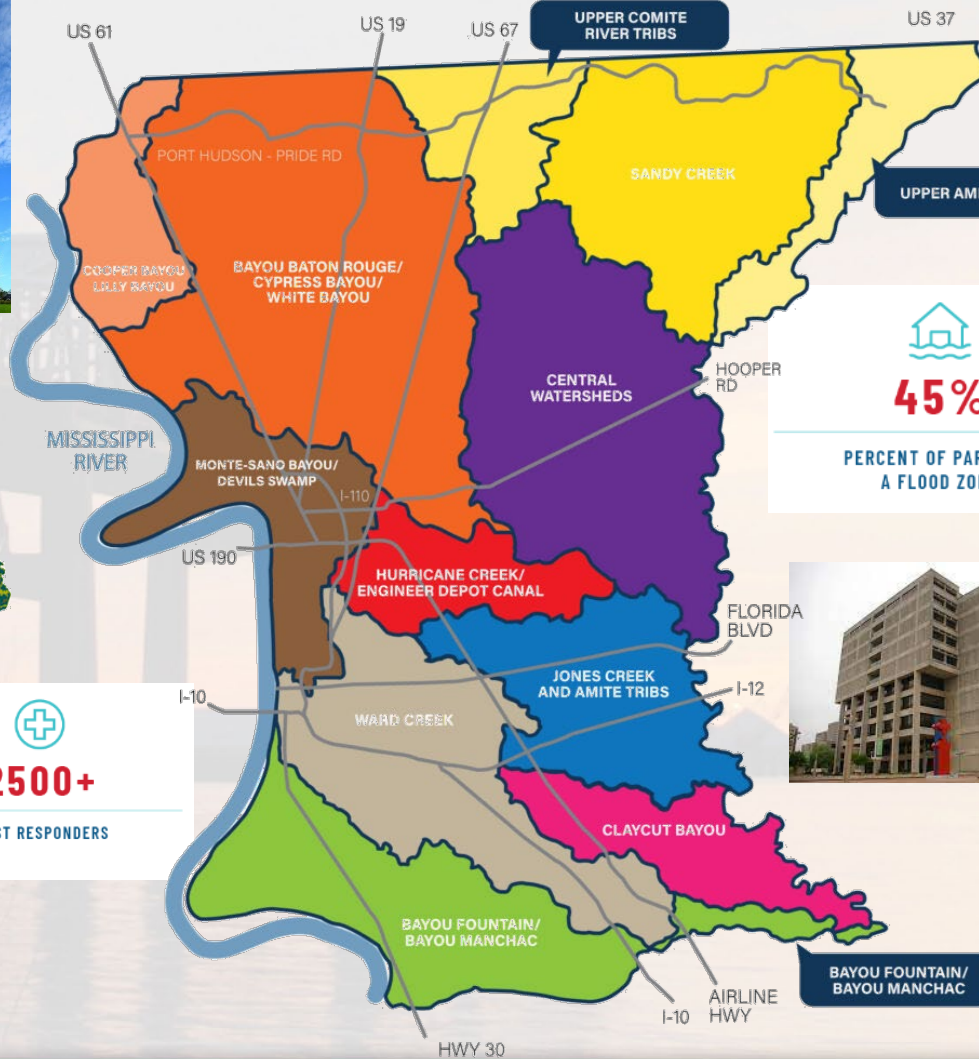


CITY OF BATON ROUGE
PARISH OF EAST BATON ROUGE



2500+

FIRST RESPONDERS



POPULATION

456,781



45%

PERCENT OF PARISH IN
A FLOOD ZONE



BTR

BATON ROUGE
METROPOLITAN AIRPORT



RED ST/CK R E A D Y

What is RED STICK READY?

RED ST/CK R E A D Y

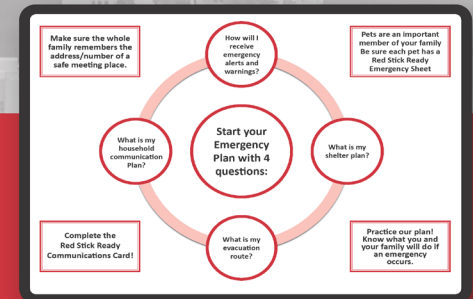
TOGETHER, EAST BATON ROUGE
PARISH IS RED STICK READY!

Baton Rouge is French for "Red Stick" and being
"Red Stick Ready" encourages our community to take
personal responsibility by having the necessary items
and plans in place prior to a disaster or emergency in
East Baton Rouge Parish.

PLAN NOW.

WORK TOGETHER.

BE READY.



@REDSTICKREADY

REDSTICKREADY.COM

www.redstickready.com

www.brla.gov/MOHSEP

✓ Stay informed!

- Text, Social media, websites, etc.

✓ Make an emergency plan.

- Ensure you have a communication plan for your household, workplace, and school.

✓ Gather supplies for a disaster kit.

- Have enough supplies for every member in your household for a minimum of 3 days.
- Include non-perishable food, water, medication, hygiene items, personal identification, cash, and pet supplies.

✓ Use the Buddy System™

- Check on friends and neighbors; make sure their basic needs are taken care of prior to, during, and after a disaster.

GET INFORMED

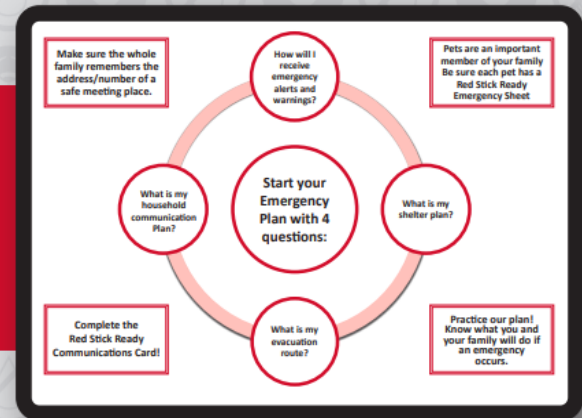
Download the [Red Stick Ready app](#) and follow us on social media.



@REDSTICKREADY

MAKE A PLAN

Visit www.redstickready.com for more preparedness tips and information on how to make a plan, build a kit and utilize the buddy system.



BUILD A KIT

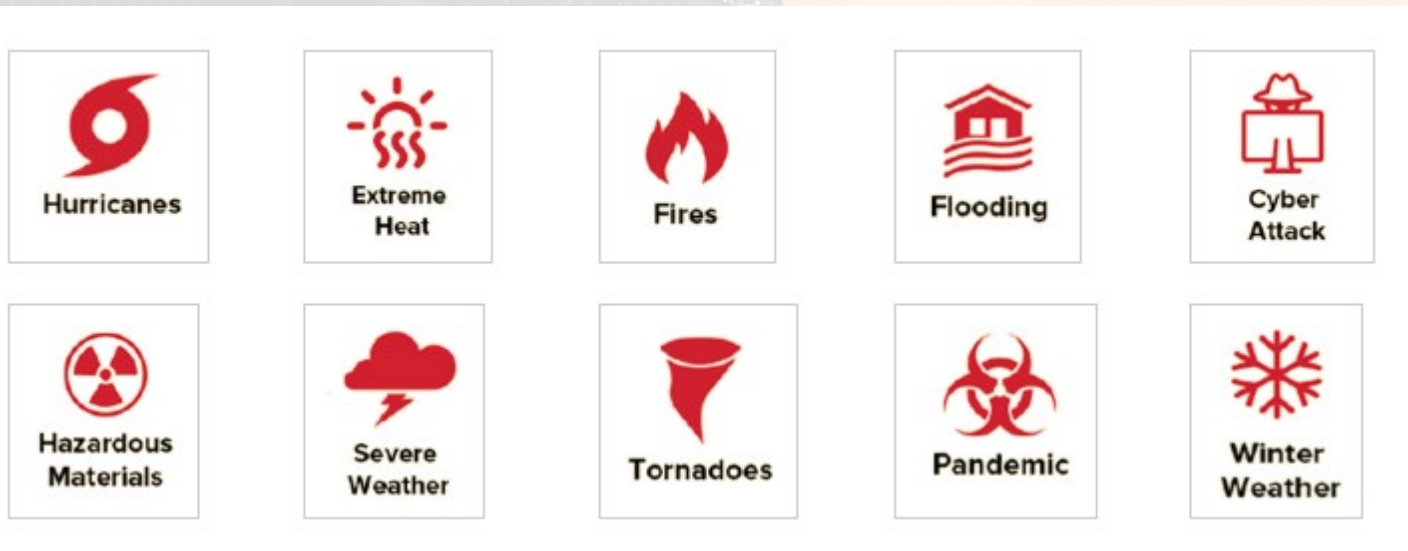
When an emergency happens, you and your family need to be ready to respond. You may need to survive on your own for several days. Being prepared means having your own food, water and other supplies to last for at least 72 hours. Use the Disaster Supply checklist, which can be found on the RSR website, to see which items are necessary for your kit.

UTILIZE THE BUDDY SYSTEM™

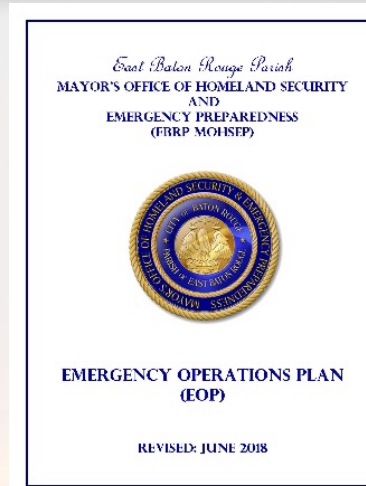
Working together with other residents of your neighborhood can save lives and property. Communicate with your neighbors to plan how the neighborhood can work together before, during, and after a disaster. Consider your elderly neighbors and offer to help them with getting prepared. Check to see that they have family or someone looking out for their well-being. Know what special skills your neighbors might have and how they can best be utilized in an emergency situation. Above all else, check with your friends, family, and neighbors and ensure everyone is prepared before an emergency happens. Remember, don't just be ready, be **Red Stick Ready!**

Below are the top 10 potential hazards that may affect East Baton Rouge Parish.

According to a recent article in Forbes magazine, EBRP was determined to be the **second most disaster prone community in the nation** (tied with Orleans Parish) with seventeen (17) disaster declarations over the past decade.



- Parish **Emergency Operations Plan (EOP)**:
 - Agency's roles and responsibilities,
 - Levels of Activation:
 - Level 1 – Monitor
 - Level 2 – Partial
 - Level 3 – Full,
 - Parish emergency procedures, and
 - Emergency stakeholder contact information (secure).
- Departmental **Continuity of Operations Plan (COOP)**:
 - Essential Functions,
 - Orders of Succession,
 - Delegations of Authority,
 - Alternate Facilities,
 - Interoperable Communications, and
 - Other key roles and procedures.
- Parish **Hazard Mitigation Plan (HMP)**:
 - Includes all 4 EBRP Municipalities and the Unincorporated Areas,
 - Required to be updated every 5 years to maintain grant eligibility,
 - Identifies top Parish hazards and risks, and
 - Identifies key projects to mitigate those hazards and risks.



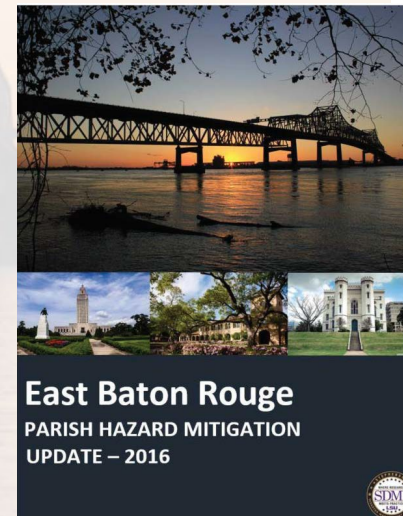
East Baton Rouge Parish Mayor's Office of Homeland Security and Emergency Preparedness (MOHSEP)

The East Baton Rouge Parish Mayor's Office of Homeland Security and Emergency Preparedness (MOHSEP)



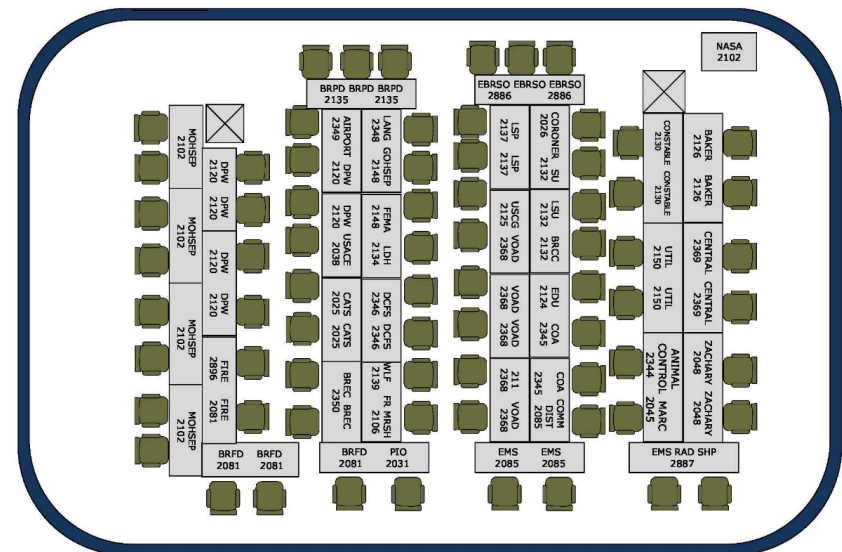
2018 Continuity of Operations Plan (COOP) / Multi-Year Strategy and Program Management Plan (MYSMP)

3773 Mars' 10 Boulevard
Baton Rouge, LA, 70807
(225) 389-2100 (Office)
(225) 389-2114 (Fax)
MOHSEP@brla.gov



- EBRP EOC serves as a command center and information sharing facility during a disaster.
- Over 50 agencies are represented.
- Other incident command spaces with the EOC:
 - Executive Overwatch
 - Technology Incident Management (TIM)
 - Medical Incident Command
 - 2 training classrooms for EOC overflow.
- One of the EOC's alternate facilities includes a Mobile Command Post.

EMERGENCY OPERATIONS CENTER
SEATING CHART



EMERGENCY INFORMATION

Looking For Flood Recovery Resources?
Click Here

Download the Redstick Ready App from the Apple iTunes or the Google Play store.

Sign up to receive Red Stick Ready text alerts by texting REDSTICKREADY to (225) 243-9991.

Useful resources:

- Red Stick Ready Twitter
- Red Stick Ready Facebook
- NWS Hourly Weather Page
- NWS New Orleans/Baton Rouge Weather Page
- Emergency Map
- Weather Map
- Traffic Map
- Stream Gauge Map
- Entergy Outage Map
- DEMCO Outage Map
- Capital Area United Way Resources (211)

ROAD CLOSURES

City-Parish has staged barricades throughout the parish near locations prone to flooding. Click here to see a list of those locations.

There are no emergency related road closures at this time.

SAND AND SANDBAGS

| Facility Name | Address | Sand | Bags |
|---|-----------------------------|------|------|
| BREC Airline Highway Fairgrounds | 16072 Airline Highway | Yes | Yes |
| BREC Alsen Park | 601 Old Rafe Mayer Road | Yes | Yes |
| BREC Cadillac Street | 6117 Cadillac Street | Yes | Yes |
| BREC Doyles Bayou Park | 7801 Port Hudson-Pride Road | Yes | Yes |
| BREC Flannery Road Park | 801 S Flannery Road | Yes | Yes |
| BREC Hartley-Vey at Gardere Park | 1702 Gardere Lane | Yes | Yes |
| BREC Lovett Road Park | 13443 Lovett Road | Yes | Yes |
| <i>*Due to construction, sand has been moved to the back parking lot.</i> | | | |
| BREC Memorial Stadium | 1702 Foss Street | Yes | Yes |

SHELTERS

| Facility Name | Address |
|--------------------|---------------------------------------|
| Bishop Ott Shelter | 1623 Convention St, Baton Rouge 70802 |
| Salvation Army | 7361 Airline Hwy, Baton Rouge 70814 |

GOVERNMENT CLOSURES

There are no government closures at this time.

SCHOOL CLOSURES

There are no school closures at this time.

SERVICE CANCELLATIONS

There are no service cancellations at this time.

HELPFUL LINKS TO EMERGENCY INFORMATION

[Medical Resources](#)
[Baton Rouge Hotel Availability](#)
[Capital Area Human Services](#)
[Capital Area United Way](#)
[City of Baker](#)
[City of Baker Fire Department](#)
[City of Baker Police Department](#)
[City of Baker Public Works](#)
[City of Central](#)
[City of Zachary Fire Dept.](#)
[Companion Animal Alliance](#)
[FEMA](#)
[Flight Information at Baton Rouge](#)
[Governor's Office of Homeland Security & Emergency Preparedness](#)
[Hotel Availability Information](#)
[Lamar-Dixon Expo Center](#)
[Louisiana Bankers Association](#)
[Louisiana Department of Transportation & Development](#)
[Louisiana District of the USGS \(River Stages\)](#)
[Louisiana State Police](#)
[MOHSEP](#)
[National Hurricane Center](#)
[National Weather Service](#)
[Traffic Information](#)
[Volunteer Louisiana](#)

brla.gov/emergency

- Use Capital Area Ready for our re-entry plan.
- URL – www.capitalareaready.com
- Placards are good to use throughout Region 2.
- Once you apply for placards, no need to apply annually. You can print your placards every year from the system.
- For any needed assistance with your account please email MOHSEP@brla.gov



Community Emergency Response Team (CERT)

- The Community Emergency Response Team (CERT) Program trains volunteers to prepare for the types of disasters that East Baton Rouge Parish may face.
- The CERT Program will help alleviate first responders in recovery efforts by freeing up manpower so that first responders are able to focus on more pertinent tasks.
- CERT volunteers receive training in different aspects of the first responder field from EMS, Fire Department, and Law Enforcement. They will also assist MOHSEP in recovery efforts post-disaster.
- Anyone can join CERT. Those under 18 years old need parental permission.

Email MOHSEPTTraining@brla.gov



Are YOU Red Stick Ready?

A large version of the Red Stick Ready logo is centered on the slide. It consists of the text "RED ST/CK" in large, bold, black letters, with a red diagonal slash between "ST" and "CK". Below this, the word "READY" is displayed in white letters, each inside a red rectangular box. The background of the slide shows a faint, grayscale image of a bridge over water.

RED ST/CK
R E A D Y

www.redstickready.com

www.brla.gov/MOHSEP

www.facebook.com/redstickready

Instagram & Twitter:
@RedStickReady

Text “REDSTICKREADY” to 225-243-9991

Office: (225) 389-2100

MOHSEP@brla.gov